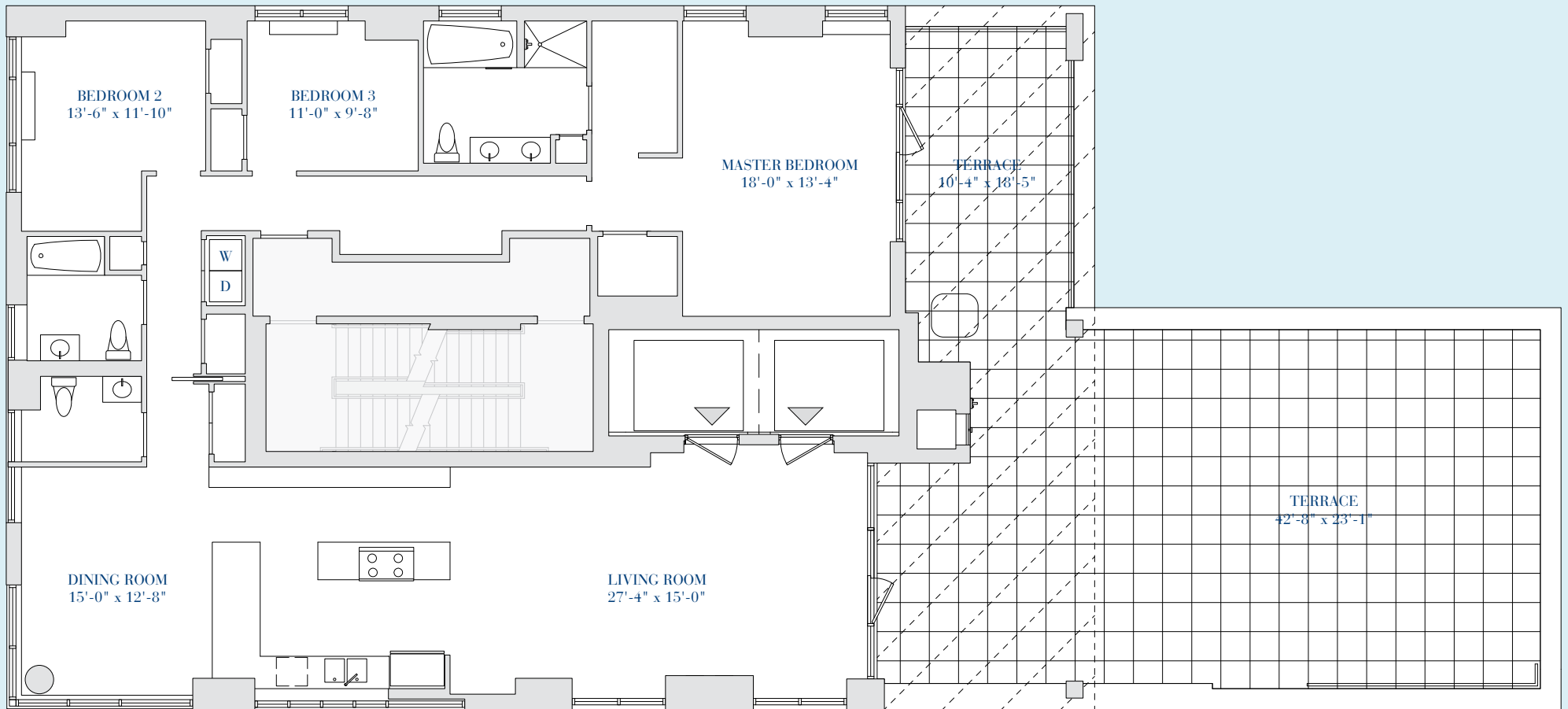
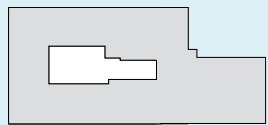


ONE MORNINGSIDE PARK

Unit PH1
3 BR / 2.5 BATH
2,159 SQ FT
1,298 SQ FT TERRACE



MANHATTAN AVENUE



W 110 STREET



Sales and Marketing by
BROWN HARRIS STEVENS
NEW DEVELOPMENT MARKETING **SELECT**
EXCLUSIVE AFFILIATE OF
CHRISTIE'S
INTERNATIONAL REAL ESTATE



The Unit Layout square footage and dimensions are approximate and subject to normal construction variances and tolerances. Square footages exceed the usable floor area. Sponsor reserves the right to make changes in accordance with the Offering Plan. Sponsor makes no representation or warranties except as may be set forth in the Offering Plan. The complete offering terms are in an offering plan available from sponsor. File no. CD 12-0186. Sponsor: 110 Manhattan Equities LLC, 316 West 118th Street, New York, New York 10026

321 West 110th Street
New York, New York